



# **OPERATION INSTRUCTION**

IP Villa Video Intercom System  
Quick Guide

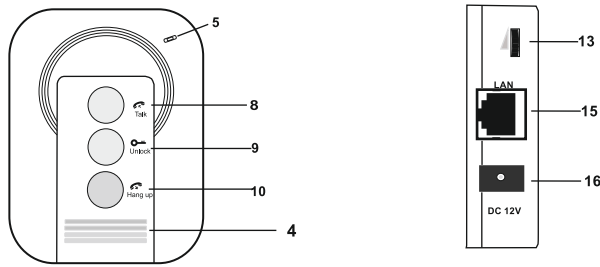
## **VIDI-MVDP-7**

# 1. Safety Instructions

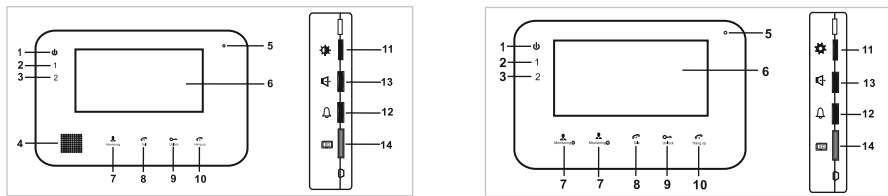
- ※ Read these instructions and keep them in a safe place for future reference.
- ※ Please refer all work related to the installation of this product to qualified service personnel or system technician.
- ※ Do not operate the appliance beyond its specified temperature, humidity or power source ratings.
- ※ Securely install the devices on vertical surfaces (solid walls/doors) not prone to vibration or impact.
- ※ Install the devices away from heat sources such as radiators, heat registers and stoves.
- ※ Installation of the terminal near consumer electronics devices, e.g. stereo receiver/amplifiers and televisions, is permitted as long as the air surrounding the terminal does not exceed the above mentioned temperature range.
- ※ Handle the appliance with care. Do not strike or shake, as this may damage the device.
- ※ The doorbell/camera units should be fitted with an approved weather shield if the chosen position is in direct sunlight, or in contact with rain, snow or irrigation sprinkler systems.
- ※ Do not use strong or abrasive detergents when cleaning the appliance body. When the dirt is hard to remove, use a mild detergent and wipe gently.
- ※ Do not overload outlets and extension cords as this may result in a risk of fire or electric shock. Distributing, copying, disassembling, reverse compiling, reverse engineering, and also exporting in violation of export laws of the software provided with this product, is expressly prohibited.

# 2. Description Of The Indoor Unit

## 2.1 Description On The Indoor Monitoring (Please take actual model as quasi)



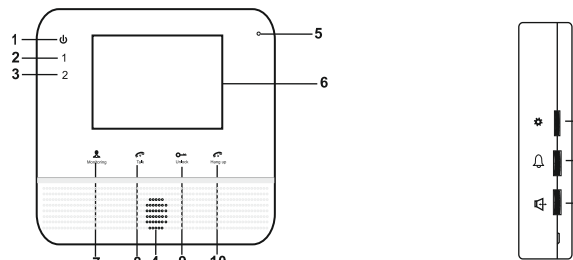
Non-visual Indoor Unit



A

B

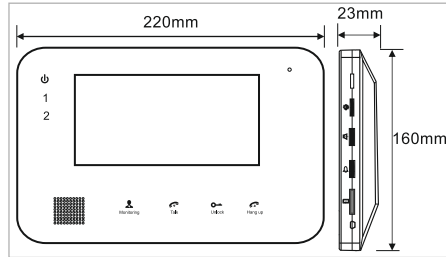
Visual Indoor Unit with 7 inch TFT LCD



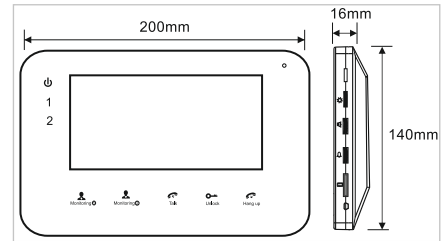
Visual Indoor Unit with 4 inch TFT LCD

NO.	Name	Descriptions
1	Power LED	The power indicator of the indoor unit
2	The door 1 LED	The light is on when the door 1 works.
3	The door 2 LED	The light is on when the door 2 works.
4	Speaker	Sound from outdoor camera
5	Microphone	Transmit the voice to outdoor camera.
6	TFT display	View visitor's image displayed on the TFT screen with visual indoor unit.
7	Monitoring	Observe the image of camera view at entrance in real time with visual indoor unit.
8	Talk	Activate conversation mode by pressing this button.
9	Unlock	Release the door lock by pressing this button.
10	Hang up	End conversation mode by pressing this button and the indoor unit will go into standby mode.
11	Color Setup for LCD screen	Make adjustments to the brightness, chrome and contrast of the LCD screen. When the LCD screen is highlighted, press this button to bring up the option brightness "", press this button again to bring up the option of chrome "", press this button once again to bring up the option contrast "". During adjust values, scroll the button upwards to decrease, and scroll the button downward to increase. By default, the values of the brightness, chrome, contrast are set at 20, 35, 20.
12	Indoor Ringer Volume	Adjust the ringer volume of indoor device manually.
13	Indoor Call Volume	Adjust volume for the indoor device during intercom.
14	SD card slot (optional)	SD card interface, support up to 32GB card for recording.
15	Ethernet Connector	RJ-45 10/100 Base-T Ethernet network. On some models, the Ethernet connector is on back panel.
16	DC 12V(Optional)	External switching power supply DC 12V. On some models, the power input socket is on back panel.

## 2.2 Specifications of the Indoor Unit

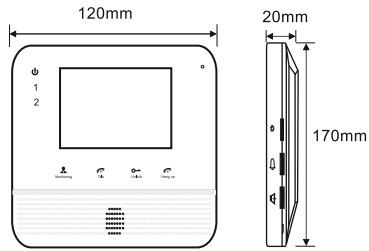


**A**

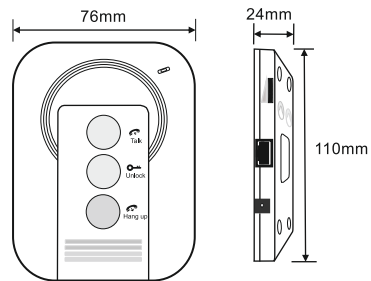


**B**

**Visual Indoor Unit with 7 inch TFT LCD**



**Visual Indoor Unit with 4 inch TFT LCD**



**Non-visual Indoor Unit**

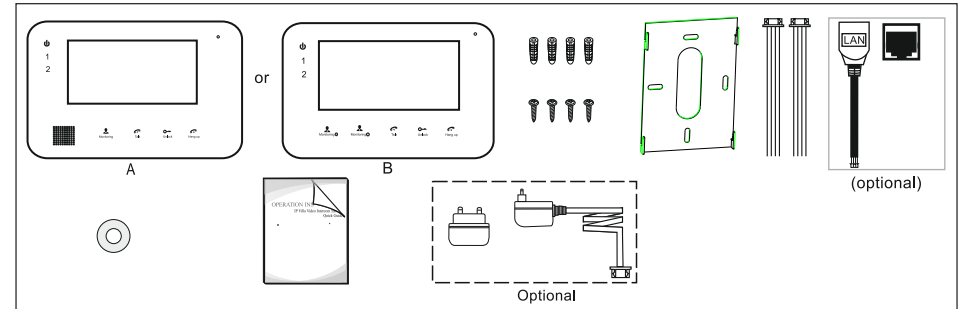
Display	7 inch TFT LCD
Resolution	800(H)X3(RGB)X480(V)
Video system	PAL/NTSC compatible
Intercom mode	Semi-Duplex communication
Conversation duration	120 seconds
Standby status	300mA max.
working status	600mA max.
Power supply	DC 12V(Optional)
	Built-in power supply (AC100V~240V)--Optional
Operation temp.	-10~+60℃
Installation	Surface mount
Dimensions	220*160*23mm(A)
	200*140*16mm(B)

Display	4 inch TFT LCD
Resolution	320(H)X3(RGB)X240(V)
Video system	PAL/NTSC compatible
Intercom mode	Semi-Duplex communication
Conversation duration	120 seconds
Standby status	300mA max.
working status	600mA max.
Power supply	DC 12V(optional)
	Build-in Power supply (AC 100V~240V)--Optional
Operation temp.	-10~+60℃
Installation	Surface mount
Dimensions	120*170*20mm

Video system	PAL/NTSC compatible
Intercom mode	Semi-Duplex communication
Conversation duration	120 seconds
Standby status	200mA max.
working status	400mA max.
Power supply	DC 12V(optional)
	Built-in power supply (AC100V~240V)--Optional
Operation temp.	-10~+60℃
Installation	Surface mount
Dimensions	76*110*24mm

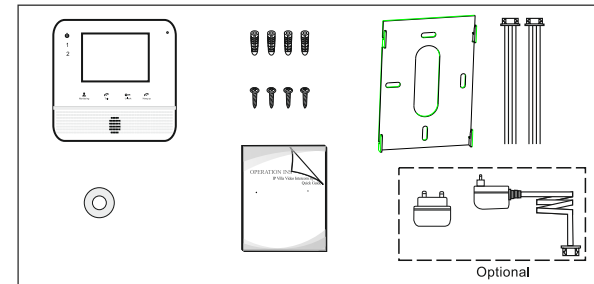
## 2.3 Fitting for the Indoor Unit

### A. For the visual indoor unit with 7 inch TFT LCD



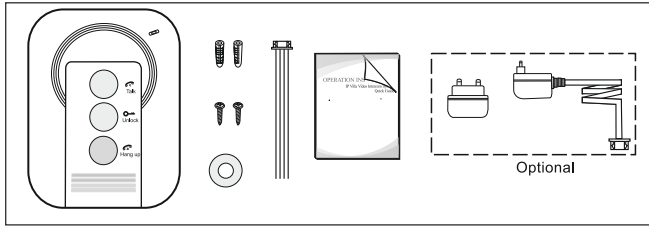
- Indoor Unit ----- 1 pcs
- Plastic Anchors ----- 4 pcs
- Screws ----- 4 pcs
- Bracket ----- 1 pcs
- 4 Pin Line ----- 2 pcs
- A Network Conversion with 4 Pin interface(optional, please take actual model as quasi)----- 1 pcs
- This Quick Guide----- 1 pcs
- External Switching Power Adapter(Optional)----- 1 pcs
- Installation CD(with full manual and android mobile phone software)----- 1 pcs

### B. For the visual indoor unit with 4 inch TFT LCD



- Indoor Unit ----- 1 pcs
- Plastic Anchors ----- 4 pcs
- Screws ----- 4 pcs
- Bracket ----- 1 pcs
- 4 Pin Line ----- 2 pcs
- This Quick Guide----- 1 pcs
- External Switching Power Adapter(Optional)----- 1 pcs
- Installation CD(with full manual and android mobile phone software)----- 1 pcs

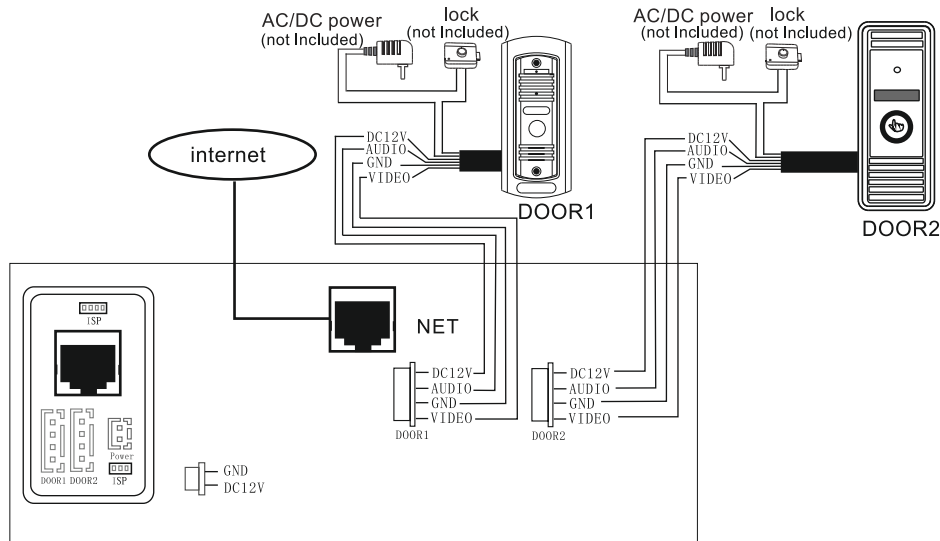
### C. For the non-visual indoor unit



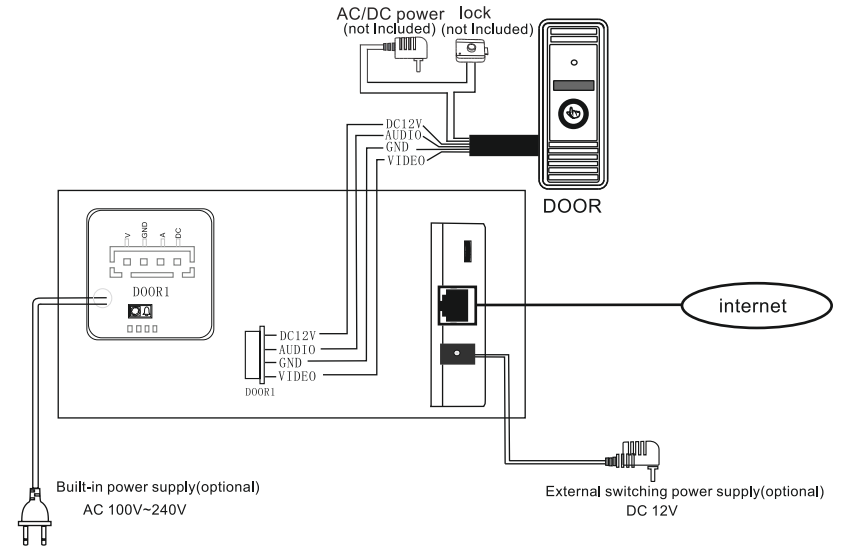
- Indoor Unit ----- 1 pcs
- Plastic Anchors ----- 2 pcs
- Screws ----- 2 pcs
- 4 Pin Line ----- 1 pcs
- This Quick Guide----- 1 pcs
- External Switching Power Adapter(Optional)----- 1 pcs
- Installation CD(with full manual and android mobile phone software)----- 1 pcs

## 2.4 Wiring Diagram(Please take actual model as quasi)

**A: For the visual indoor unit with 7 inch or 4 inch TFT LCD monitor, users can connect up to two outdoor cameras to the corresponding interfaces by their own's requirement according to the following wiring diagram. And indoor device power with a built-in power or an external power optional, please refer to actual control using.**



**B: For the non-visual indoor unit, users can connect only one outdoor camera to the corresponding interface according to the following wiring diagram. And indoor machine power with a built-in power or an external power optional, please refer to actual control using.**

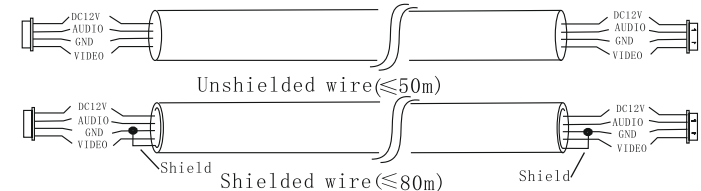


## 2.5 Note On Wiring Connection

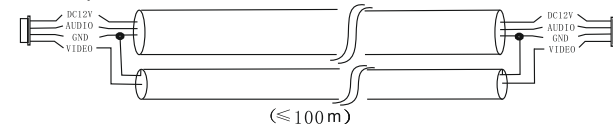
- i** The electric lock source camera is not include in the package, you can purchase an electric lock which is suitable for you need.
- i** In the standard delivery the system supports locks with Normally Open (N.O.) door unlocking method. It means that in the normal state the dry contact is opened so the lock is kept under constant closed state. If the unlocking push-button is pressed and the dry contact is changed to closed, then the lock is released.
- i** Please note that the 2P Short Pin is designed for programming the indoor monitor, the indoor monitor will be programmed to main monitor if you plug the 2P Short Pin in; however the indoor monitor will be programmed to extension monitor if the 2P Short Pin is pulled out. Setup ok, after power machine automatically detects, if it is in state machine work Set, need makes the machine to detect electric.
- !** **Indoor machine power with a built-in power and the external power optional. Please refer to actual control using. If the indoor machine with a built-in power source, applicable to wide voltage range(AC 100V~240V). Please first pull out the AC power plug before installation of device(Shown as below).**

- i** Use and selection of wire, please refer to the following.(The actual effect and the quality of wire rod has the very big relations)

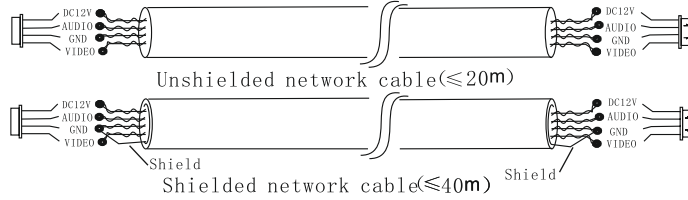
1. 4C ordinary unshielded and shielded wire connection mode:  
 Distance  $\leq 28m$  ( $4 \times 0.2mm^2$ ) ; Distance  $\leq 50m$  ( $4 \times 0.3mm^2$ ) ; Distance  $\leq 80m$  ( $4 \times 0.5mm^2$ ).



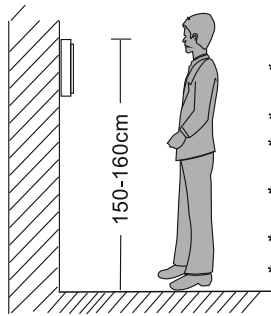
2. 3C ordinary unshielded +video wire (75-3) connection mode:



3. CAT5 or CAT6 network cable connection mode: (Not recommended)



## 2.6 Installation Process of Indoor Units

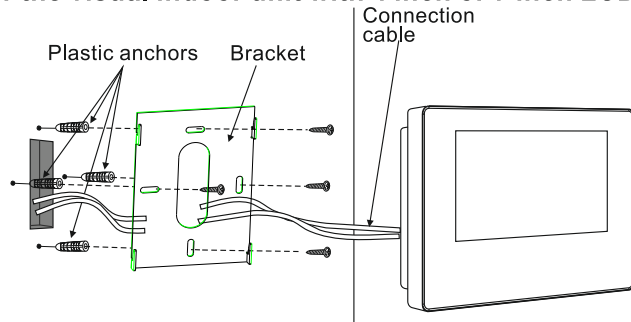


**NOTE:**

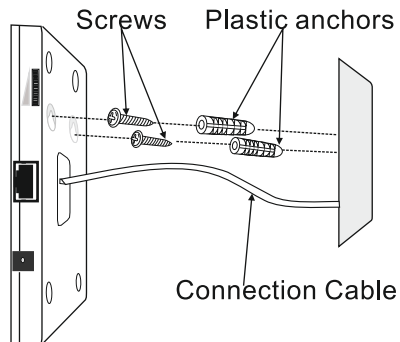
- \* Avoid installation of the device near strong radiation e.g. TV set, video recorder and PC etc.
- \* Maintenance should be complied with a qualified technician.
- \* Avoid hard shake, beating and collision, otherwise the internal exact components maybe be damaged.
- \* Select the most suitable position where the monitor is located at user's eye level.
- \* Switch off power supply before installing.
- \* Keep more than 30cm away from AC power supply to avoid external interference.
- \* Keep it away from the water and magnetic field.

To install the indoor unit, please follow these steps as below:

### A. For the visual indoor unit with 4 inch or 7 inch LCD TFT



### B. For the non-visual indoor unit

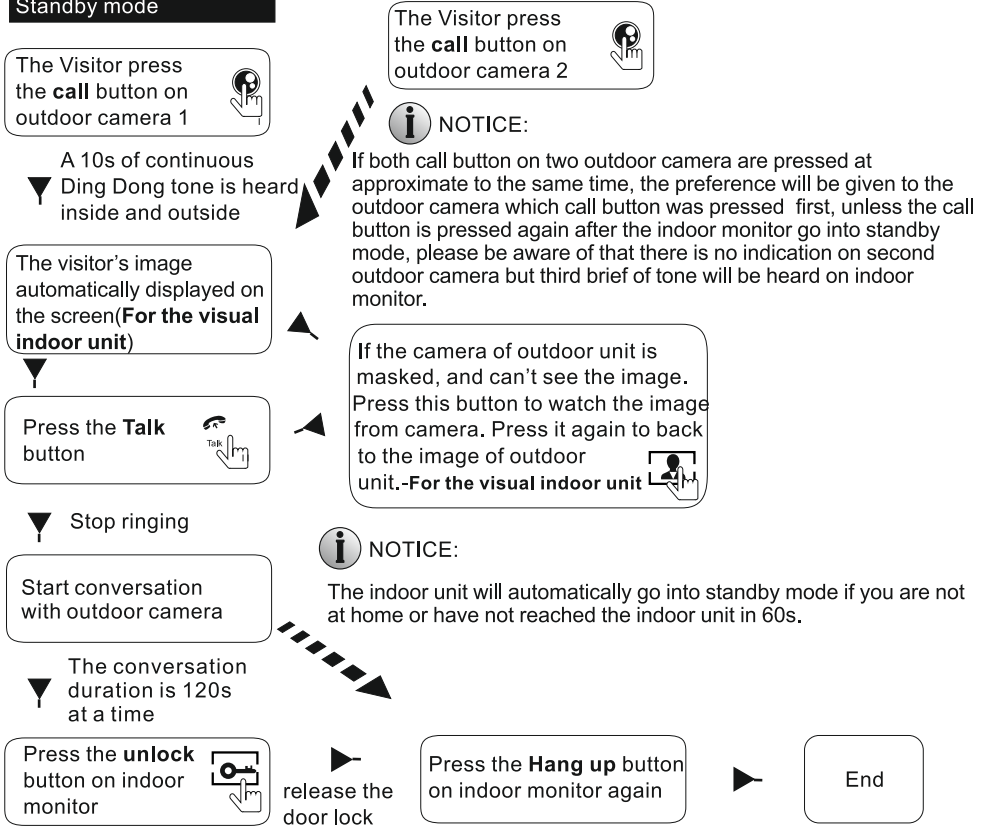


## 2.7 Operation Introduction On Indoor Unit

### ◆ VISITOR CALL

\* Please be aware of Connection of 2 outdoor cameras is required.

#### Standby mode

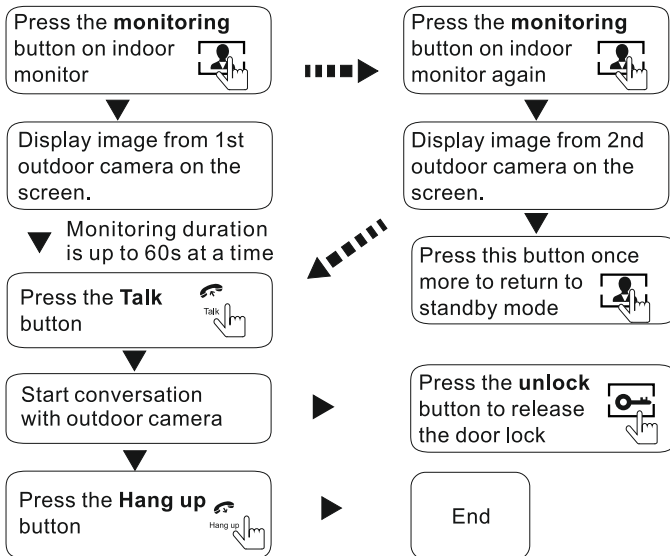


- NOTICE:** Both the visitor's voice and image will be not switched off within 20s of time span when the unlock button is pressed, this individualized function allow you to make sure whether the visitor already come in.
- NOTICE:** For the models with SD card, if the SD card has been inserted into the indoor unit, when visitor press the Call button on outdoor camera, the device will start recording and the recording will continue to be a few seconds.

## ◆ MONITORING On Indoor Unit(For the visual indoor machine)

\* Please be aware of Connection of 2 outdoor cameras to 1 indoor monitor is required for dual entrance monitoring at least.

### Standby mode



- NOTICE:**
- If you are using only one outdoor camera in **monitoring** mode, you can also end the **monitoring** mode by pressing the **hang up** button.
  - Please note that if you are using two outdoor cameras, but it appears a blank display when you are activating the monitoring mode on either of indoor units, to completely solve this accident, please pull out all power supply of indoor unit and then plug in power supply back after 10s later.
  - For a non-visual indoor unit, you can't view the image of the outdoor camera on the indoor unit, and you can view the image of the outdoor camera via web browser on PC or a smart-phone/Pad with a specific program "MobileEyeDoor+".
  - If a conversation with outdoor unit is underway in monitoring mode, during this time a visitor press the call button on either of outdoor unit, the monitoring mode will be switched off, the just visitor's image will appear on its screen and continuous ringing will be heard. You can press the talk button to reactivate conversation with the visitor; for more detailed operations, please refer to **VISITOR CALL** on page 8.

## 3. Device Connect--Through wired network or wireless network(optional)

### A. User can connect the indoor device through network cable, operation steps:

1. Connect the crystal head of network cable to RJ45 interface of the indoor unit.
2. Connect the outdoor camera(s) to the indoor unit through 4 pin line(s).
3. Connect the power adapter to the electrical outlet of the indoor unit and power on.
4. Wait for a while until hearing a beep, this time the indoor unit starts completely.

Network connection diagram through wired network of Figure 1 as an example of a non-visual indoor.

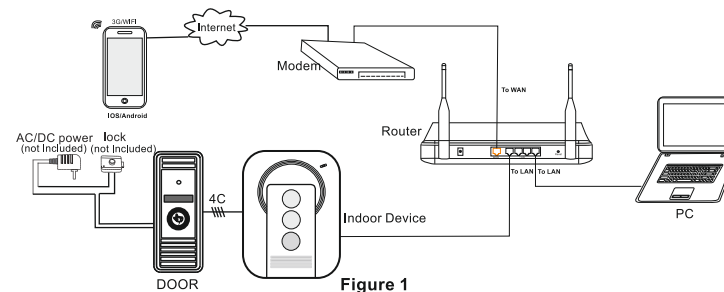


Figure 1

The indoor device with WIFI function can be also work with WIFI wireless network.

1. If user connects a network cable to the indoor device, the parameters for WIFI can be set up via web browser, please see section **Network--WIFI(Optional)** of the electronic use's manual on the included CD for more information, network-connection diagram please refer to Figure 1 on the above.

2. If user doesn't want to connect a wired cable to the indoor unit, and user needs to prepare a wireless router and a smart-phone or a pad with IOS or Android system. The parameters for WIFI can be set up via a smart-phone or a pad with IOS or Android system, please see section **Soft AP function** of the electronic user's manual on the included CD for more information. Network connection diagram via wireless network as Figure 2 as an example of a non-visual indoor unit.

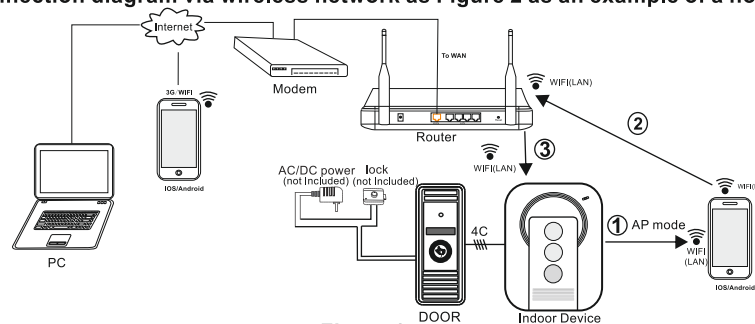


Figure 2

## 4 Mobile Phone Software Visit

This IP doorbell can transmit live feed to your smart-phones and pads with IOS or android system via a program "MobileEyeDoor+", and support P2P technology. Calling on the outdoor camera, notification will be pushed onto master's phone immediately, ringtone ringing on the phone, confirm and access to the video live view directly. The device with WIFI function can work in wired network and wireless network.

### A. Wired network

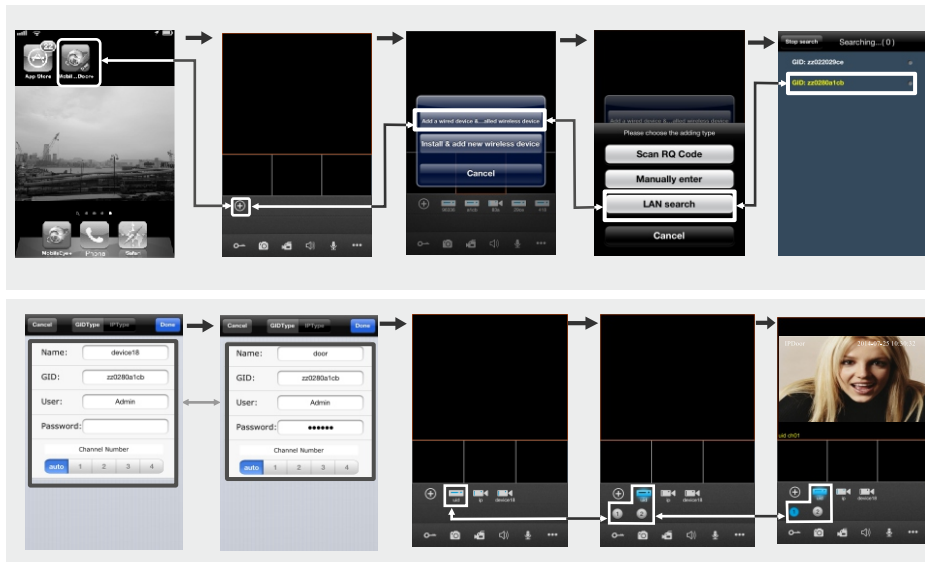
- Step 1.** Please download a program "MobileEyeDoor+" via "Play Store" on a smart-phone/pad with android system or via "APP Store" on an iPhone/iPad with IOS system.
- Step 2.** Connect the indoor device through a wired cable to a wireless router(please refer to **Figure 1 on section 3. Device Connect**), connect user's phone/pad to the same wireless router through WIFI.
- Step 3.** Run the program "MobileEyeDoor+". Click "+" to add a new device, first click "Add a wired device & ...alled wireless device" to the next interface to choose the adding type, there are three methods to add device: "Scan QR Code", "Manually enter" and "LAN Search".
- Step 4.** Fill in the correct information about the device in the corresponding fields. The default user name and password are "Admin" and "888888".



**Step 5.** After adding the device successfully, the device will appear on the main screen. User can enable the alarm push function of the current device whether or not according to his own's actual requirement.

**Step 6.** Now user can surveillance, unlock, communication, capture and recording on his phone/pad about the remote device via the program "MobileEyeDoor+".

In the following diagram, we use an iPhone mobile with IOS system.  
The usage of a mobile with android system is similar.



## B. Wireless network

**Step 1.** Please download a program "MobileEyeDoor+" via "Play Store" on a smart-phone/pad with android system or via "APP Store" on an iPhone/iPad with IOS system.

**Step 2.** Turn WLAN function of user's phone, then click the "MobileEyeDoor+" icon to run the program, click "Add" to select adding mode, here must select "Install & add new wireless device" to the next interface to add wireless device.

**Step 3.** In standby mode, long-press the "Talk" button on the indoor device, don't loosen the button until hearing a beep, this means the device will reboot automatically and go into the AP mode. Wait for a moment, when hearing another beep it means the device starts successfully and goes into AP mode.

**Step 4.** On "WIFI setting" interface, click "Manual connect device WIFI" to enter WLAN interface of user's phone to see available networks, and UID number of the indoor device(the UID is attached to the machine) will be shown on the available networks list. Select it and connected successfully means the mobile will be connected to the indoor unit directly(shown as follows).

**Step 5.** Return to the "WIFI setting" interface and go to the next step. Available wireless routers will be shown on the list. Choose one and click it, if the wireless password of the wireless router is enabled, it will pop-up a window to enter the password of the wireless router, input the correct password and setting ok, the indoor device will reboot automatically, it will be connected to the wireless router after starting when hearing a beep again.

**Step 6.** Click "Next Step" to add a new indoor device, fill in the correct information about the device in the corresponding fields. The default user name and password are "Admin" and "888888".

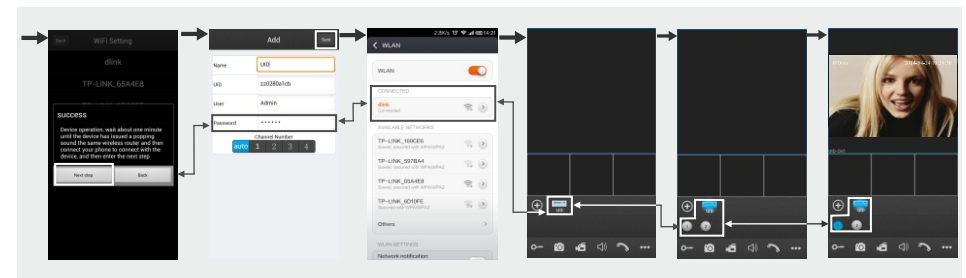
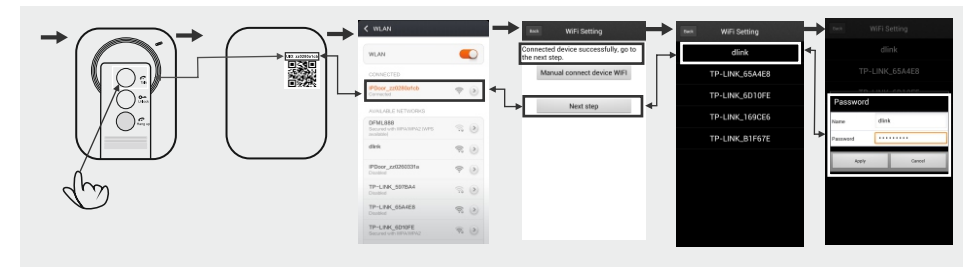
**Step 7.** Return to the WLAN settings on the mobile and choose the wireless router which the indoor device has been connected to.

**Step 8.** Now user can surveillance, unlock, communication, capture and recording on his phone/pad about the remote device via the program "MobileEyeDoor+".

### Note:

- 1). If the device has went into AP mode, but the wireless function of the device hasn't been activation via "MobileEyeDoor+" on the phone or user doesn't do any operate about the device, after 10 minutes the device will automatically exit AP mode and returns to the previous connection mode.
- 2). When the device has went into AP mode, long-press the "Talk" button again, don't loosen the button until hearing a beep, this means the device will reboot automatically and will return to the previous connection mode.
- 3). If users want to connect the device via wireless network, when the device restarts automatically after completing set of the parameters about WIFI, please unplug the Ethernet cable connected to the device, otherwise the device will run via wired network.
- 4). When the indoor device goes into AP mode, on "WIFI Setting" interface, the phone with android system can be connected to the indoor device WIFI successfully automatically please wait for a moment, and the phone with IOS system user needs to connect the indoor device WIFI function manually.

In the following diagram, we use a smart-phone with android system.  
The usage of an iPhone/iPad with IOS system is similar.

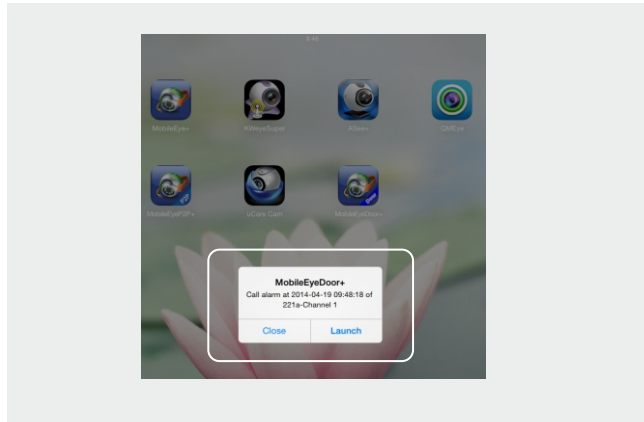


### C. Alarm push function

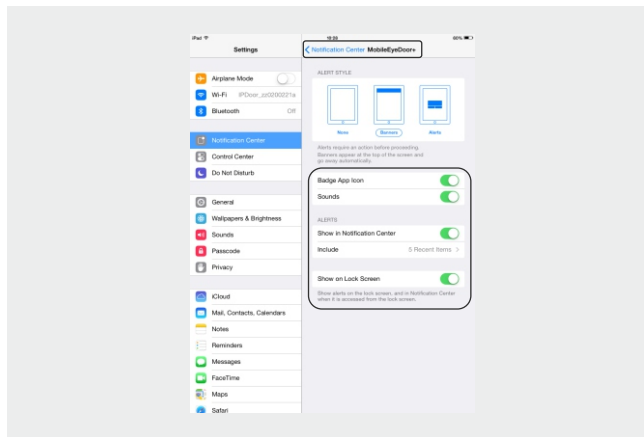
To access the interface about the parameters of one device, there is an option “**video push**” or “**Alarm Setting**” for alarm push function. When select “**On**” or “**Open**”, it indicates that the alarm push function of the current device is enabled. To enable alarm push function, users need to make sure the indoor device and the mobile phone are both connected to internet.

#### Note:

- 1) The alarm push function can be effective, and the device must be added by UID type.
- 2) When the option “**video push**” or “**Alarm Setting**” on the mobile software interface is set to “**On**” or “**Open**”, someone press the call button on the outdoor camera, the notification message will be pushed onto the master's phone (shown as below). And users can click the alarm list to access to the video live view of the channel directly or access to the video live view to unlock for the outdoor camera.



- 3) For the phone with iOS system, please go into “Settings->Notification Center” on you phone, click on “MobileEyeDoor+” and make sure you have “Badge APP Icon, Sounds, Shown in Notification Center” enabled. Also make sure you have “Shown on Lock Screen” enabled.



For more details, please refer to the electronic user's manual on the included CD.

#### Statement

- \* If there is any doubt or disputable regarding information in this manual, you can call our company for clarification.
- \* In all cases, for more details, please refer to the electronic user's manual on the included CD. Thanks.